

**COMPANY**

**PROFIL**

  
***E.S.M. SARL***  
*We are the best*



**2023**

## BUSINESS INFORMATION

- Business name : COMPANY ESM SARL
- Business adress : 15, mandrandele street, Latin Quarter, Kolwezi city
- Email : [stanleymutombo@esmsarl.com](mailto:stanleymutombo@esmsarl.com)  
[info.esmsarl@gmail.com](mailto:info.esmsarl@gmail.com)  
[www.esmsarl.com](http://www.esmsarl.com)
- Tel : (+243) 970 860 040 /821 097 977 /896 577 124
- Company Director : Stanley MUTOMBO
- Bankers : EQUITY BANK

ESM Sarl was established as an engineering and construction. Company in the Democratic Republic of Congo in 2020.

The company provides a wide variety of, mainly, engineering goods and services. We are specialized in electrical maintenance, digital billboard installation, road signage and road markings, road paving. We have cleaning service, general construction and mechanical maintenance.

We have machines for rental, truck, maintenance stripping machine, rehabiliity pump and valves recovery service from mechanical to electrical equipment, supplies construction materials, bore-hole drilling.

To ensure excellent service delivery, we have engaged well qualified personnel to carry out the various works. Our client base is the general public including government and non-government institutions, public and private institutions and individuals.

## COMPANY STRATEGY

### PURPOSE

- To be a leader in the engineering industry by providing enhanced services, Relationship and profitability.

### VISION

- To provide quality services that exceeds the expectations of our esteemed customers.

### MISSION STATEMENT

- To build long term relationships with our customers and clients and provide exceptional customer services by pursuing business through innovation and Advanced technology.

### CORE VALUES

- We believe in treating our customers with respect and faith. We grow through creativity, invention and innovation. We integrate honesty, integrity and business functioning.

### GOALS

- Regional expansion in the field of engineering and develop a strong base of key customers
- Increase the assets and investments of the company to support the development of services
- To build good reputation in the field of engineering and become a key player in the industry

## FINANCIAL CONSIDERATIONS

The company expects to reach the desired profits this year and does not anticipate serious cash-flow problems. We believe that the average profitability per month for the next 2 years will be sufficient. Most of the company's liabilities come from management investment.

## SCOPE OF WORK

The detailed range of goods and services we offer are as below:

### 1. Construction and Electrical

- House and other buildings construction
- Electrical installations to buildings
- Industrial Electrical works (Motors, Transformers)
- Generators installations and maintenance
- High voltage terminations and Joints
- Electrical Overhead line works
- Flooring, Tiling including Partition & ceiling finishes
- Plumbing & sanitary installations

### 2. Construction and mechanical

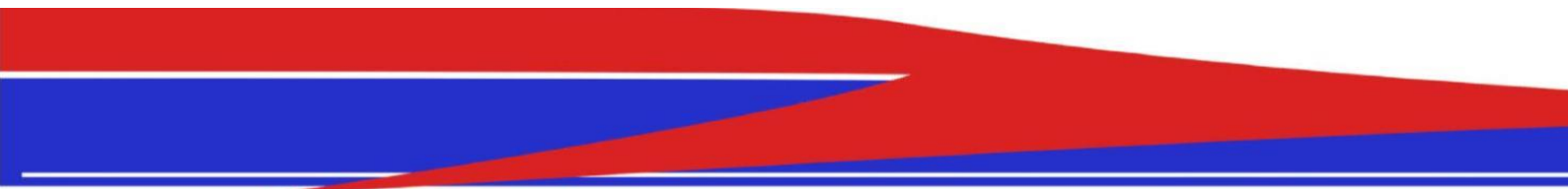
- Maintenance mechanical
- Transport
- Maintenance stripping machine
- Rehability pump and valves recovery services from mechanical to electrical
- Digital billboards
- Galvanised guard rails
- U-channels
- Pump assembly and alignment

### 3. Civil Engineering works

- Earth works
- Road paving, other concrete works & road bush clearing
- Precast and pre-stressed concrete

- Piling and foundation
- Bore-hole drilling and other related works
- Structural steel engineering
- Railway construction & maintenance

#### **4. Services works**

- Water drilling
  - Cleaning services
  - Provide us with safety equipment
  - Supplies of office equipment's
  - Supplies of valves
- 



## Section electrical

- Installation switch board M.V and L.V
- Maintenance electrical
- M.V and L.V cable laying, jointing and terminations
- Installation lighting (L.V)
- Installation transformers and wiring





## CABLES

### Power cables

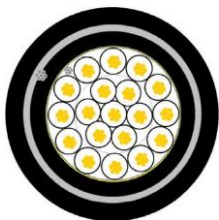
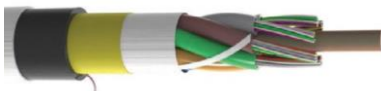
- MV Paper Insulated Lead Cables (PILC)
- MV Cross – Linked Polyethelyne (XLPE)
- LV Underground (1,5 - 300mm)
- Mining cable
- Aerial bundled conductors (ABC)
- Airdac Concentric House Connection
- Overhead Aluminum conductors (ACSR/AAAC)
- Aluminum underground
- Earth continuity conductor (ECC)
- Multicores
- Single Cores (185 - 630mm)

### Electric wires

- Household general purpose (GP)
- Surfix
- Flat twin + earth (FTE)
- Bare copper earth (BCEW)
- Trailing
- Submersible
- Cabtyres
- Welding
- Ripcords
- Blasting Wire

### Communication cables

- Instrumentation
- Telephone
- Fibre optic
- Control
- Accessories
- Leaky feeder
- Seismic cables



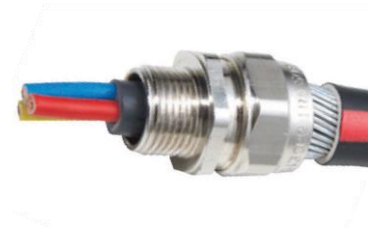


## ACCESSORIES

### Cable systems

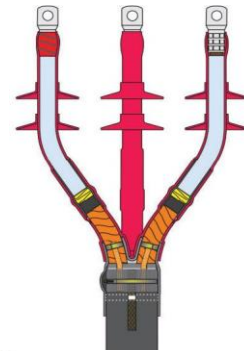
#### Joints:

- MV Heat and cold shrink
- MV Premolded
- MV Oil and compound boxes
- MV Fibreglass boxes
- LV Resin and heat shrink



#### Terminations:

- MV heat and cold shrink
- MV premolded
- Separable connectors
- Connex plug-in type



#### Tapes:

- Semi-conductive
- Self-amalgamating
- Insulating and filler putty
- Butyl and stress grading mastic
- Track resistant
- PVC insulating
- Crimping and torque shear connectors
- Compounds, oils and resins
- RELCO cable clamps and wedges (mineshafes)
- Overhead line equipment
- Glands, Shrouds, Lugs and Ferrules



### General accessories

- Conduit
- Trunking
- Cable support systems
- Tools and instruments
- Domestic switches and sockets
- Industrial switches and sockets



## DISTRIBUTION



## MECHANICAL MAINTENANCE

- Welding
- Pump maintenance and assembly
- Mechanical equipment general
- Vehicle maintenance
- General factory maintenance
- Contractor maintenance





## ASSEMBLY OF MATERIALS CONSTRUCTION

- Installations of guards
- Manufacturing supply
- U-Channels for guard
- Temporal signs « for initial road works » and Permanent Signs « for completed road »
- Bore-hole drilling and other related works road paving drive ways and walk
- Bore-hole drilling and other related works road paving drive ways walk









## HAVE CLEANING SERVICES



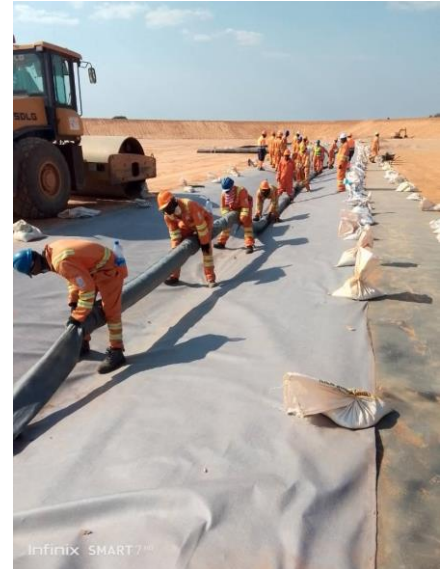


## SUPPLIES OF MECHANICAL EQUIPMENT





## MAINTENANCE ET INSTALLATION HDPE







Your One-Stop Global Energy Supply Partner

# ACTOM

ELECTRICAL PRODUCTS  
Magnet House

16 March 2023

**TO WHOM IT MAY CONCERN**

This letter serves to confirm that Actom Electrical Products at 4 Branch Road, Driehoek, Germiston, R.S.A., supplies Actom Products and other products to ESM SARL.

Yours Faithfully

Isabel Magalhaes  
Product Manager - Transmission and Distribution

ACTOM (Pty) Ltd  
Registration Number: 2008/001863/07  
Chairman: MA Mthethwa  
Group Chief Executive Officer: M Naidoo  
Directors:  
Executive: M Naidoo, EA Van Wyngaardt, S Chauke  
(MLE Augennet)\* - Alternate to S Chauke) \*French  
Non-Executive: C Kula, N Mohamed, S Ntswazi



4 Branch Road, Driehoek, Germiston, 1401  
P.O. Box 978, Germiston, 1400  
Tel: +27 (011) 878-3050  
www.actom.co.za